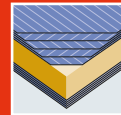


FERRO FireSafe/FireSafe Akustik

THE FIRE RESISTANT LIFE-SAVER.



New
decors and
sizes



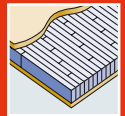
5-ply faces



Exterior grade
MDF faces



Flat steel
stabilizer



Laminated
core



Fire
protection



Acoustic
insulation



Robust
construction



TECHNICAL DETAILS

1/8 DOOR FRAME			
1 Framing/timber	Finger-jointed and laminated timber framing.		
8 Flat steel stabilizer	Patented flat steel stabilizer – thermally separated and sound insulated – to absorb tractive and shearing forces. Stabilizers are glued and friction-locked with the framework.		
Frame width/Options to shorten/Glass apertures	Thickness of door blank 68 mm - 98 mm		
	Frame width in mm	can be trimmed by	
	Top	155	110*
	Side	lock-side 70/hinge-side 155	25*/110*
	Bottom	155	110*
Minimum distance for glass apertures on all 4 sides: 180 mm. The frame width corresponds to the shortening dimension. When trimmed by a maximum (120 mm) at the bottom side, a single rebate (max. 18 mm) or fitting of drop down seal is possible.			
2 INNER LAYER			
Construction	- Sandwich construction of laminated core (spruce) and ecological wood fibre insulation, model FireSafe Akustik including sound insulation - Surface stability through vertically aligned annual rings		
Bonding	Free of formaldehyde		
3-7 COVER BOARD			
Bonding	AW bonding according to DIN 68705-2 temperature resistant up to 130° - 5 layers (noble veneer, longitudinal) - 3 layers (cross grained veneer) = can be veneered individually Full-surface bonding with the overall construction		
EXTERNAL DOOR BLANK			
Model/finish	Cut and sanded		
Processing information	With FERRO FireSafe external door blanks you can easily manufacture fire resistant external doors. Please contact us and we will provide you with the relevant documents. Please be aware of the nationally stipulated usability certificates. For further information, please view: brandschutz@moralt-ag.de		

* with a max. rebate of 30 mm

CERTIFICATION

FERRO FIRESAFE/FIRESAFE AKUSTIK	FireSafe	FireSafe Akustik
LENGTH IN MM	bis 2,470	bis 2,470
WIDTH IN MM	bis 1,230	bis 1,230
THICKNESS IN MM	68-98	68-98
DIFFERENT CLIMATE TESTING		
DIN EN 1121 : 2000-09	test climate c, d, e	Prüfklima c, d, e
TOLERANCE CLASSES (by using three hinges)		
DIN EN 12219 : 2000-6	3	3
THERMAL TRANSFER COEFFICIENT		
U-value (W/m²K) DIN EN ISO 10077-2 : 2012-06	1,02 - 0,8	1,2 - 0,9
SOUND INSULATION		
DIN EN ISO 717-1 $R_{w,i}$ (dB)	31-37	42-47*
FIRE RESISTANCE		
BS476 : Part 22 : 1987	FD30**	FD30**
BURGLAR-RESISTANCE		
DIN EN 1627 : 2011-09	RC2/RC3	RC2/RC3
WEIGHT: 2,240 X 1,050 MM KG/PIECE	70-98	88-121

* Element thickness 88mm ** depends on nationally stipulated usability certificates



PRODUCT RANGE

FERRO FIRESAFE/FIRESAFE AKUSTIK – 68 MM / 78 MM / 88 MM / 98 MM	2,110 (1,890*)		2,240 (2,020*) / 2,370 (2,150*)		2,470 (2,250*)	
Length in mm	950	1,050	950	1,050	1,150	1,230
Width in mm	950	1,050	950	1,050	1,150	1,230
Mahogany	▲	▲	▲	▲	▲	▲
Okoumé/Gabun	▲	▲	▲	▲	▲	▲
Meranti	▲	▲	▲	▲	▲	▲
Oak	▲	▲	▲	▲	▲	▲
Knotty oak	▲	▲	▲	▲	▲	▲
Cross-grain knotty oak 3.5 mm	▲	▲	▲	▲	▲	▲
Rustic knotty oak	▲	▲	▲	▲	▲	▲
Pine	▲	▲	▲	▲	▲	▲
Spruce	▲	▲	▲	▲	▲	▲
Larch	▲	▲	▲	▲	▲	▲
Knotty larch	▲	▲	▲	▲	▲	▲
White fir	▲	▲	▲	▲	▲	▲
Paint-grade	▲	▲	▲	▲	▲	▲
MDF Exterior	▲	▲	▲	▲	▲	▲
CPL	▲	▲	▲	▲	▲	▲
FERRO FIRESAFE/FIRESAFE AKUSTIK – 66 MM / 76 MM / 86 MM / 96 MM	▲		▲		▲	
Cross grained PV	▲	▲	▲	▲	▲	▲

* minimal dimension ▲ available in 5 working days PV = peeled veneer face All veneer surfaces = cut veneer or fine-line

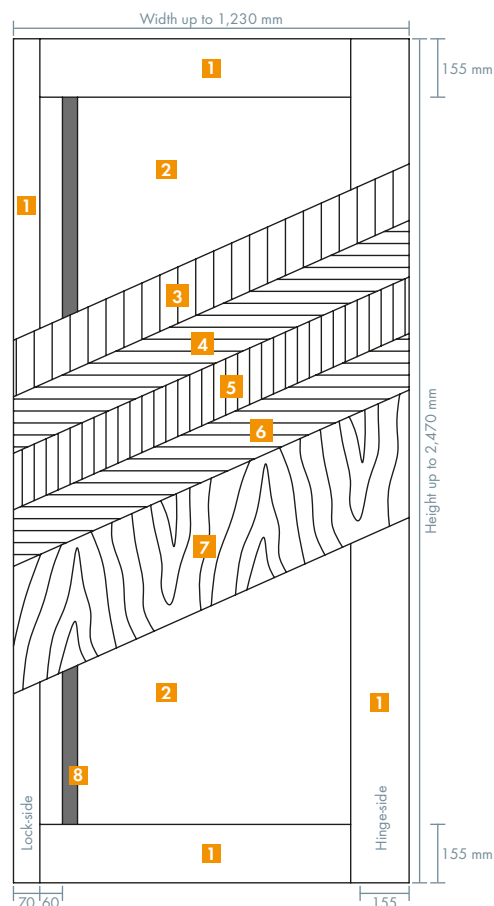
Further dimensions, sizes and facings on request.



Any Questions? Info-Hotline: +49 8026 92538-11 www.moralt-ag.com
Moralt AG, Obere Tiefenbachstraße 1, 83734 Hausham, Phone: +49 8026 92538-0, Fax: +49 8026 92538-40, E-mail: info@moralt-ag.de

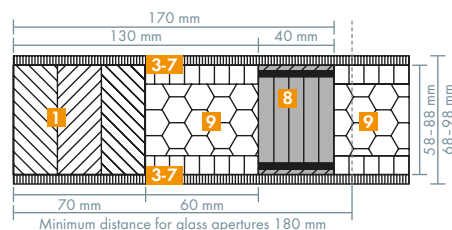
This information is according to the present state of knowledge and does not represent an assurance of properties. Existing laws and regulations are to be followed by the recipient of our products at his own responsibility. All information refers solely to products by Moralt AG.

FERRO FireSafe/FireSafe Akustik

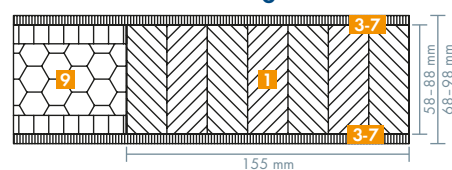


- 1** Solid timber frame
- 2** Sandwich system
- 3-7** Cover board
- 8** Flat steel stabilizer
- 9** Ecological wood fibre insulation

Cross-section view lock-side



Cross-section view hinge side



CNC-processing service

CNC processing on request.

Despatch of single cargo

Direct delivery of a single pieces to the manufacturer is possible.

Profi-Net timber distributor