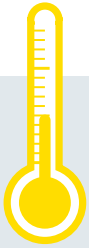
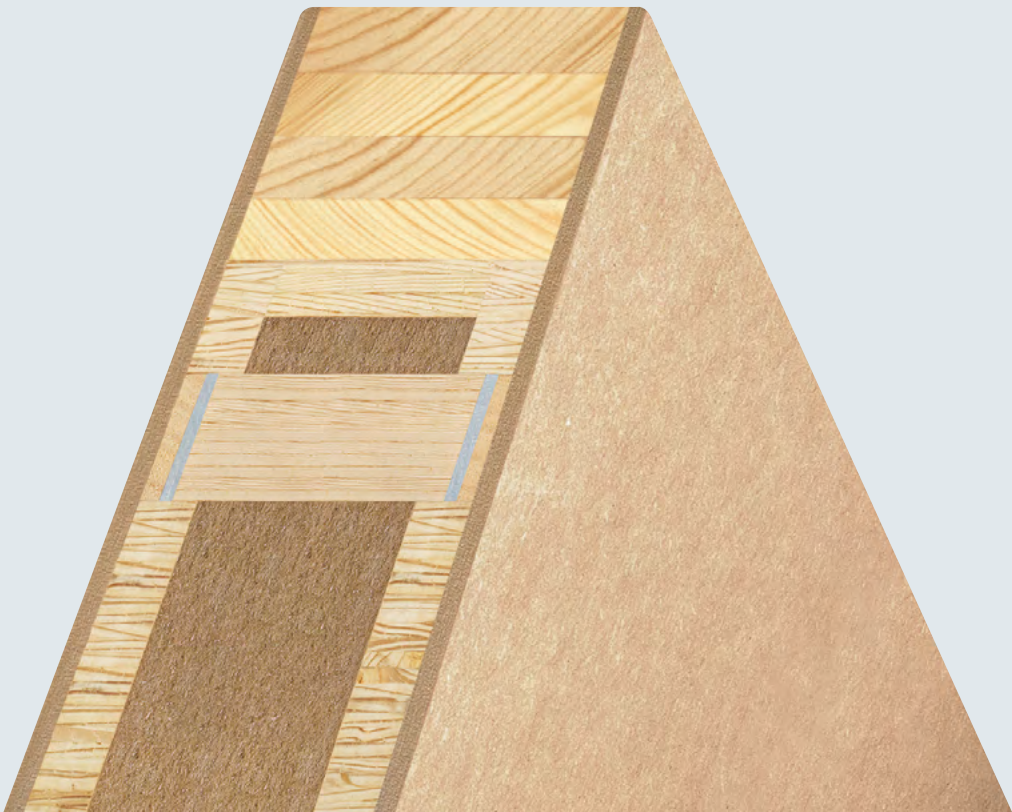


## FERRO FireSafe Passiv

# THE ENERGY SAVER FOR LOWER HEATING COSTS.



FD30  
FD60



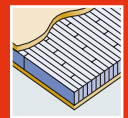
5-ply faces



Exterior grade  
MDF faces



Flat steel  
stabilizer



Laminated  
core



Robust  
construction



Passive-house  
compliant



Fire  
protection



# TECHNICAL DETAILS

1/8 DOOR FRAME			
<b>1 Framing/timber</b>	Finger-jointed and laminated PINE framing.		
<b>8 Flat steel stabilizer</b>	Lock-side patented flat steel stabilizer - thermally separated and sound insulated - to absorb tractive and shearing forces. Stabilizers are glued and friction-locked with the framework.		
<b>Frame width/Options to shorten/Glass apertures</b>	Thickness of door blank 98 mm		
	Frame width in mm	can be trimmed by	
	Top	70	10*
	Side	70	10*
	Bottom	70	10*
Minimum distance for glass apertures on all 4 sides: 180 mm. The frame width corresponds to the shortening dimension. When trimmed by a maximum at the bottom (10 mm), a single rebate (max. 18 mm) or fitting of drop down seal is possible.			
2 INNER LAYER			
<b>Construction</b>	- Sandwich construction of laminated core - With ecological solid timber insulation - Surface stability through vertically aligned annual rings		
<b>Bonding</b>	Free of formaldehyde		
3-7 FACING			
<b>Bonding</b>	AW bonding according to DIN 68705 -2 - 5 layers (noble veneer, longitudinal) Full-surface bonding with the overall construction		
EXTERNAL DOOR BLANK			
<b>Model/finish</b>	Trimmed and sanded		
<b>Processing information</b>	With FERRO FireSafe external door blanks you can easily manufacture fire resistant external doors. Please contact us and we will provide you with the relevant documents. Be aware of the nationally stipulated usability certificates.		

\* with a max. rebate of 30 mm

## CERTIFICATION

LENGTH IN MM	upto 2,470
WIDTH IN MM	upto 1,230
THICKNESS IN MM	98
DIFFERENT CLIMATE TESTING	
DIN EN 1121 : 2000-09	test climate c, d, e
TOLERANCE CLASSES (by using three hinges)	
DIN EN 12219 : 2000-6	3
THERMAL TRANSFER COEFFICIENT	
U-value (W/m²K) DIN EN ISO 10077-2 : 2012-06	0,76
FIRE RESISTANCE	
BS476 : Part 22 : 1987	FD30/FD60*
BURGLAR-RESISTANCE	
DIN EN 1627 : 2011-09	RC2/RC3
WEIGHT: 2,240 X 1,050 MM KG/PIECE	80
SUCCESSFULLY TESTED TO PAS 24:2012	

\* FD60 only available with Oak frames



## PRODUCT RANGE

FERRO FIRESAFE PASSIV – 98 MM								
Length in mm	2,110 (2,090*)		2,240 (2,220*) / 2,370 (2,350*)			2,470 (2,450*)		
Width in mm	950	1.050	950	1.050	1.150	1.230	950	1.050
Mahogany	▲	▲	▲	▲	▲	▲	▲	▲
Okoumé/Gabun	▲	▲	▲	▲	▲	▲	▲	▲
Meranti	▲	▲	▲	▲	▲	▲	▲	▲
Oak	▲	▲	▲	▲	▲	▲	▲	▲
Knothy oak	▲	▲	▲	▲	▲	▲	▲	▲
Cross-grain knothy oak 3.5 mm	▲	▲	▲	▲	▲	▲	▲	▲
Rustic knothy oak	▲	▲	▲	▲	▲	▲	▲	▲
Pine	▲	▲	▲	▲	▲	▲	▲	▲
Spruce	▲	▲	▲	▲	▲	▲	▲	▲
Larch	▲	▲	▲	▲	▲	▲	▲	▲
Knothy larch	▲	▲	▲	▲	▲	▲	▲	▲
White fir	▲	▲	▲	▲	▲	▲	▲	▲
Paint-grade	▲	▲	▲	▲	▲	▲	▲	▲
MDF Exterior	▲	▲	▲	▲	▲	▲	▲	▲
CPL	▲	▲	▲	▲	▲	▲	▲	▲

\* minimal dimension ▲ available in 5 working days

All veneer surfaces = cut veneer or fine-line



### CNC-processing service

CNC processing on request.  
Also available as a Passive House compliant door kit with accessories.

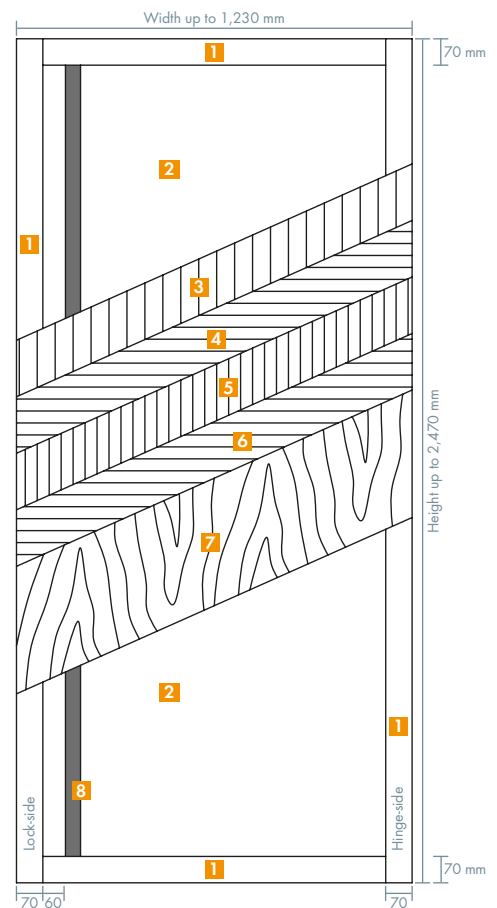


Further dimensions, sizes and facings on request.

<b>Any Questions?</b> Info-Hotline: +49 8026 92538-11 <a href="http://www.morall-ag.com">www.morall-ag.com</a>
Morall AG, Obere Tiefenbachstraße 1, 83734 Hausham, Phone: +49 8026 92538-0, Fax: +49 8026 92538-40, E-Mail: <a href="mailto:info@morall-ag.de">info@morall-ag.de</a>

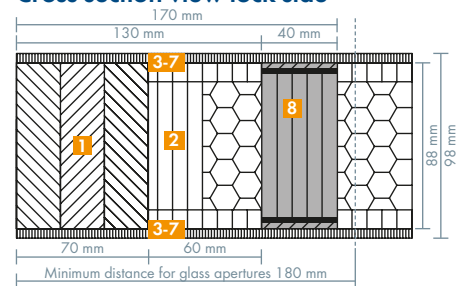
This information is according to the present state of knowledge and does not represent an assurance of properties. Existing laws and regulations are to be followed by the recipient of our products at his own responsibility. All information refers solely to products by Morall AG.

## FERRO FireSafe Passiv

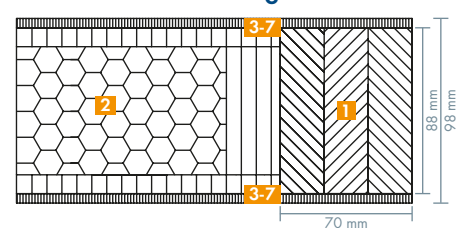


- 1 Framing/timber
- 2 Sandwich system with thermal and fire insulation
- 3-7 Facing
- 8 Flat steel stabilizer

### Cross-section view lock-side



### Cross-section view hinge side



Profi-Net timber distributor

© Morall AG - Version: 08/2021