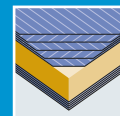


FERRO KlassikPlus

THE BESTSELLER FOR SECURITY AND COMFORT.



New
decors and
sizes



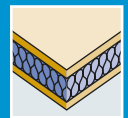
5-ply faces



Exterior grade
MDF faces



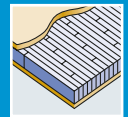
Flat steel
stabilizer



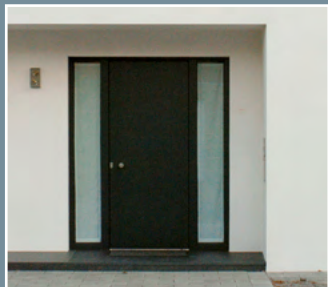
PU hard
foam core



Robust
construction



Laminated
core



TECHNICAL DETAILS

| | | |
|---|--|---|
| 1/8 DOOR FRAME | | |
| 1 Framing/timber | Finger-jointed and laminated timber framing. | |
| 8 Flat steel stabilizer | Lock-side patented flat steel stabilizer – thermally separated and sound insulated – to absorb tractive and shearing forces. Stabilizers are glued and friction-locked with the framework. | |
| Frame width/Options to shorten/Glass apertures | Thickness of door blank 68/78/88/98 mm | |
| | Frame width in mm | can be trimmed by |
| | Top | 155 110* |
| | Side | lock-side 70/hinge-side 155 lock-side 25*/hinge-side 110* |
| | Bottom | 155 120* |
| Minimum distance for glass apertures on all 4 sides: 180 mm. The entrance width corresponds to the shortening dimension. When cut to minimum length at the bottom (120 mm), a single rebate (max. 18 mm) or fitting of drop down seal is possible. | | |
| 2 INNER LAYER | | |
| Construction | – Sandwich construction of laminated core (spruce) and HCFC-free and environmentally compatible PU hard foam | |
| Bonding | Free of formaldehyde | |
| 3-7 COVER BOARD | | |
| Bonding | AW bonding according to DIN 68705 -2 temperature resistant up to 130° – 5 layers (noble veneer, longitudinal) – 3 layers (cross grained veneer) = can be veneered individually Full-surface bonding with the overall construction | |
| EXTERNAL DOOR BLANK | | |
| Model/finish | Cut and sanded | |

* with a max. rebate of 30 mm

CERTIFICATION

| | | | | |
|--|-------------------------------|------|------|------|
| LENGTH IN MM | 2,110/2,240/2,370/2,470/2,600 | | | |
| WIDTH IN MM | 950/1,050/1,150/1,230 | | | |
| THICKNESS IN MM | 68 | 78 | 88 | 98 |
| DIFFERENT CLIMATE TESTING | | | | |
| DIN EN 1121 : 2000-09 | test climate c, d, e | | | |
| TOLERANCE CLASSES (by using three hinges) | | | | |
| DIN EN 12219 : 2000-6 | 3** | | | |
| THERMAL TRANSFER COEFFICIENT 2,240 X 1,050 MM | | | | |
| U-value (W/m²K) DIN EN ISO 10077-2 : 2012-06 | 0,97 | 0,86 | 0,75 | 0,68 |
| SOUND INSULATION | | | | |
| DIN EN ISO 717-1 R _w (dB) | 30/38* | | | |
| BURGLAR-RESISTANCE | | | | |
| DIN EN 1627 : 2011-09 | RC2/RC3** | | | |
| WEIGHT: 2,240 X 1,050 MM KG/PIECE | 62 | 70 | 72 | 78 |

* model FERRO KlassikPlus Akustik on request
** certified upto height 2,470 mm



PRODUCT RANGE

| FERRO KLASSIKPLUS – 68 MM / 78 MM / 88 MM / 98 MM | | | | | | | | | | |
|---|----------------|----------------|----------------|----------------|----------------|----------------|----------------|----------------|----------------|----------------|
| Length in mm | 2,110 (1,880*) | 2,240 (2,010*) | 2,370 (2,140*) | 2,470 (2,240*) | 2,600 (2,370*) | 2,110 (1,880*) | 2,240 (2,010*) | 2,370 (2,140*) | 2,470 (2,240*) | 2,600 (2,370*) |
| Width in mm | 950 | 1,050 | 950 | 1,050 | 1,150 | 1,230 | 950 | 1,050 | 1,150 | 1,230 |
| Mahogany | ▲ | ○ | ▲ | ○ | ▲ | ▲ | ▲ | ▲ | ▲ | ▲ |
| Okoumé/Gabun | ○ | ○ | ▲ | ○ | ▲ | ▲ | ▲ | ▲ | ▲ | ▲ |
| Meranti | ▲ | ▲ | ▲ | ▲ | ▲ | ▲ | ▲ | ▲ | ▲ | ▲ |
| Oak | ▲ | ○ | ▲ | ○ | ▲ | ▲ | ▲ | ▲ | ▲ | ▲ |
| Knotty oak | ▲ | ▲ | ▲ | ▲ | ▲ | ▲ | ▲ | ▲ | ▲ | ▲ |
| Knotty oak 3.5 mm** | ▲ | ▲ | ▲ | ▲ | ▲ | ▲ | ▲ | ▲ | ▲ | ▲ |
| Rustic knotty oak | ▲ | ▲ | ▲ | ▲ | ▲ | ▲ | ▲ | ▲ | ▲ | ▲ |
| Pine | ▲ | ▲ | ▲ | ▲ | ▲ | ▲ | ▲ | ▲ | ▲ | ▲ |
| Spruce | ▲ | ▲ | ▲ | ▲ | ▲ | ▲ | ▲ | ▲ | ▲ | ▲ |
| Larch | ▲ | ▲ | ▲ | ▲ | ▲ | ▲ | ▲ | ▲ | ▲ | ▲ |
| Knotty larch | ▲ | ▲ | ▲ | ▲ | ▲ | ▲ | ▲ | ▲ | ▲ | ▲ |
| White fir | ▲ | ▲ | ▲ | ▲ | ▲ | ▲ | ▲ | ▲ | ▲ | ▲ |
| Paint-grade | ○ | ○ | ▲ | ○ | ▲ | ▲ | ○ | ▲ | ▲ | ▲ |
| MDF Exterior | ○ | ○ | ○ | ○ | ▲ | ▲ | ○ | ▲ | ▲ | ▲ |
| CPL | ▲ | ▲ | ▲ | ▲ | ▲ | ▲ | ▲ | ▲ | ▲ | ▲ |
| FERRO KLASSIKPLUS – 66 MM / 76 MM / 86 MM / 96 MM | | | | | | | | | | |
| Length in mm | 2,110 (1,880*) | 2,240 (2,010*) | 2,370 (2,140*) | 2,470 (2,240*) | 2,600 (2,370*) | 2,110 (1,880*) | 2,240 (2,010*) | 2,370 (2,140*) | 2,470 (2,240*) | 2,600 (2,370*) |
| Width in mm | 950 | 1,050 | 950 | 1,050 | 1,150 | 1,230 | 950 | 1,050 | 1,150 | 1,230 |
| Cross grained PV | ▲ | ○ | ▲ | ▲ | ▲ | ▲ | ▲ | ▲ | ▲ | ▲ |

* minimal dimension ** cross-grain ○ in stock up to 68 mm ▲ available in 5 working days PV = peeled veneer face
All veneer surfaces = cut veneer or fine-line

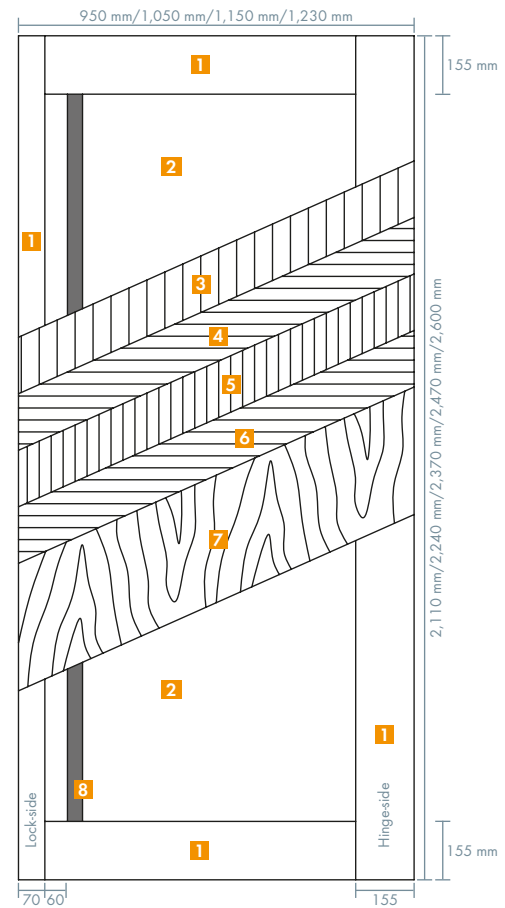
Further dimensions, sizes and facings on request.



Any Questions? Info-Hotline: +49 8026 92538-11 www.moralt-ag.com
Moralt AG, Obere Tiefenbachstraße 1, 83734 Hausham, Phone: +49 8026 92538-0, Fax: +49 8026 92538-40,
E-Mail: info@moralt-ag.de

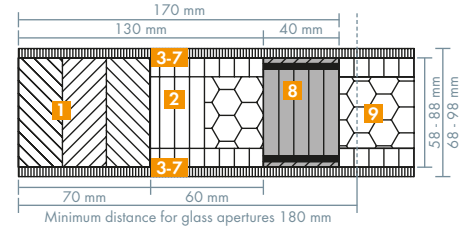
This information is according to the present state of knowledge and does not represent an assurance of properties. Existing laws and regulations are to be followed by the recipient of our products at his own responsibility. All information refers solely to products by Moralt AG.

FERRO KlassikPlus

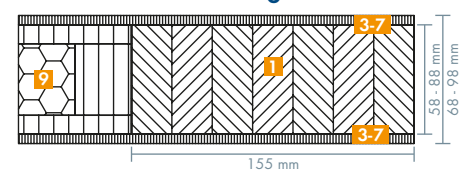


- 1** Framing/timber
- 2** Inner core layer in sandwich system/PU
- 3-7** Cover board
- 8** Flat steel stabilizer
- 9** PU hard foam

Cross-section view lock-side



Cross-section view hinge side



Despatch of single cargo

Direct delivery of a single piece to the manufacturer is possible.

CNC-processing service

All types may be delivered CNC processed.

Profi-Net timber distributor