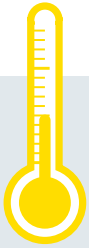
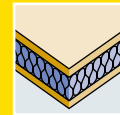


## FERRO Passiv

# THE ENERGY SAVER FOR LOWER HEATING COSTS.



New:  
Size  
Flexibility



PU hard  
foam core



Exterior grade  
MDF faces



Flat steel  
stabilizer



PU hard  
foam core



Robust  
construction



Passive-house  
compliant



# TECHNICAL DETAILS

|   |  |                             |                               |
|---|--|-----------------------------|-------------------------------|
| <b>1/3 DOOR FRAME</b>   |  |                             |                               |
| <b>1 Framing/timber</b>   | Pine timber framing finger-jointed and laminated.  |                             |                               |
| <b>3 Flat steel stabilizer</b>  | Lock-side patented flat steel stabilizer - thermally separated and sound insulated - to absorb tractive and shearing forces. Flat steel straps are glued and friction-locked with the framework.   |                             |                               |
| <b>Frame width/Options to shorten/Glass apertures</b>   | Thickness of door blank 98 mm  |                             |                               |
|   | Frame width in mm  | can be trimmed by           |                               |
|   | Top  | 155                         | 110*                          |
|   | Side   | lock-side 70/hinge-side 155 | lock-side 25*/hinge-side 110* |
|   | Bottom   | 155                         | 120*                          |
| Minimum distance for glass apertures on all 4 sides: 180 mm.<br>The frame width corresponds to the shortening dimension. When trimmed by a maximum at the bottom (120 mm), a single rebate (max. 18 mm) and/or fitting of drop down seal is possible. |  |                             |                               |
| <b>2 INNER LAYER</b>  |  |                             |                               |
| <b>Construction</b>   | Quality-proven<br>- Sandwich construction of laminated core (spruce) and HCFC-free and environmentally compatible PU hard foam<br>- Well surface stability through vertically aligned annual rings |                             |                               |
| <b>Bonding</b>  | Free of formaldehyde   |                             |                               |
| <b>4 DOOR FACING</b>  |  |                             |                               |
| <b>Bonding</b>  | AW bonding according to DIN 68705 T2 temperature resistant up to 130°<br>MDF exterior<br>Full-surface bonding with the overall construction  |                             |                               |
| <b>EXTERNAL DOOR BLANK</b>  |  |                             |                               |
| <b>Model/finish</b>   | Cut and sanded   |                             |                               |
| <b>Processing information</b>   | With FERRO Passive external door blanks you can manufacture doors systems with a U-value, lower than 0.8 W/m²K). Please contact us and we will provide you with the relevant documents.            |                             |                               |

\* with a max. rebate of 30 mm

## EXAMINATIONS AND TESTS

|  |                  |
|--|------------------|
| <b>LENGTH IN MM</b>                              | upto 2,470       |
| <b>WIDTH IN MM</b>                               | upto 1,150       |
| <b>THICKNESS IN MM</b>                           | 98               |
| <b>DIFFERENT CLIMATE TESTING</b>                 |                  |
| DIN EN 1121 : 2000-09                            | test climate „c“ |
| DIN EN 1121 : 2000-09                            | test climate „d“ |
| DIN EN 1121 : 2000-09                            | test climate „e“ |
| <b>TOLERANCE CLASSES (by using three hinges)</b> |                  |
| DIN EN 12219 : 2000-6                            | 3                |
| <b>THERMAL TRANSFER COEFFICIENT</b>              |                  |
| U-value (W/m²K) according to EnEV                | 0,69             |
| <b>SOUND INSULATION</b>                          |                  |
| DIN EN ISO 717-1 $R_{w,1}$ [dB]                  | 30-42*           |
| <b>BURGLAR RESISTANT</b>                         |                  |
| DIN ENV 1627 : 1999-04                           | RC2/RC3          |
| <b>WEIGHT: 2,240 X 1,050 MM KG/PIECE</b>         | 78               |

\* for version Akustik



## PRODUCT RANGE

|                     |                |       |                |       |       |                |       |
|---------------------|----------------|-------|----------------|-------|-------|----------------|-------|
| <b>FERRO PASSIV</b> |                |       |                |       |       |                |       |
| Length in mm        | 2,110 (1,880*) |       | 2,240 (2,010*) |       |       | 2,470 (2,240*) |       |
| Width in mm         | 950            | 1,050 | 950            | 1,050 | 1,150 | 1,050          | 1,150 |
| MDF exterior        | ▲              | ●     | ▲              | ●     | ●     | ●              | ●     |

\* minimal dimension ● in stock ▲ available in 5 working days



**Despatch of single cargo**  
Direct delivery of single door blanks is possible.

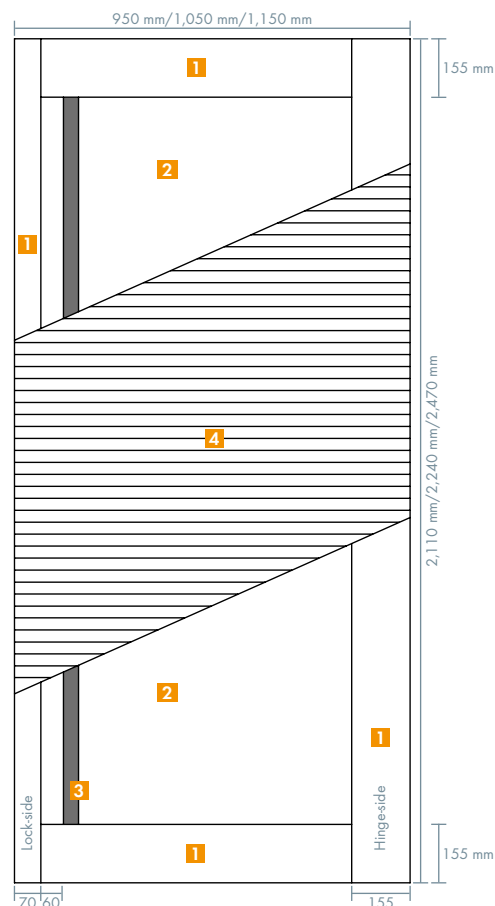
**CNC processing service**  
All door blanks can be supplied CNC processed.

Further dimensions, sizes and facings on request.

|  |
|--|
| <b>Any Questions?</b> Info-Hotline: +49 8026 92538-11 <a href="http://www.moralt-ag.com">www.moralt-ag.com</a><br>Moralt AG, Obere Tiefenbachstraße 1, 83734 Hausham, Phone: +49 8026 92538-0, Fax: +49 8026 92538-40,<br>E-Mail: <a href="mailto:info@moralt-ag.de">info@moralt-ag.de</a> |
|--|

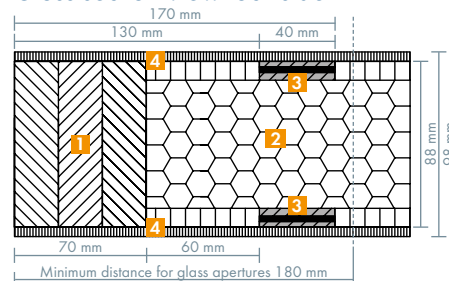
This information is according to the present state of knowledge and does not represent an assurance of properties. Existing laws and regulations are to be followed by the recipient of our products at his own responsibility. All information refers solely to products by Moralt AG.

## FERRO Passiv

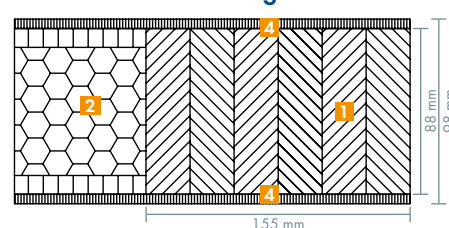


- 1 Framing/timber
- 2 Sandwich system with high heat insulation
- 3 Flat steel stabilizer
- 4 MDF face

### Cross-section view lock-side



### Cross-section view hinge side



© Moralt AG - Version: 07/2019

Profi-Net timber distributor

